

Beyond the Golden Gate

An Interdisciplinary Assessment
of Boundary Expansion Options
for the Monterey Bay National
Marine Sanctuary

The Bren School Group Project



James Frew (Faculty Advisor), Hugo Hoffman, Cameron Gray, Emma Freeman, Carey Batha, Sarah Pierce, Jenna Driscoll

The proposed sanctuary expansion area



Research Question #1:

Have the original reasons for exclusion changed? Were they valid concerns?

1. the anticipated discharge plume of the combined **sewer overflow** component
2. the **shipping channel** providing access to and from San Francisco Bay
3. the **dredged material** disposal site

Federal Register v.57, no. 182, September 18, 1992

Research Question #2:

Does the area meet the criteria for “special national significance” under the National Marine Sanctuaries Act?

1. Its conservation, recreational, ecological, historical, scientific, cultural, archaeological, educational, or aesthetic qualities;
2. The communities of living marine resources it harbors; or
3. Its resource or human-use values

National Marine Sanctuaries Act

How have the original reasons for exclusion changed?

1. Sewer overflow
2. Shipping channel
3. Dredge material deposition sites

How have the original reasons for exclusion changed?

1. Sewer overflow

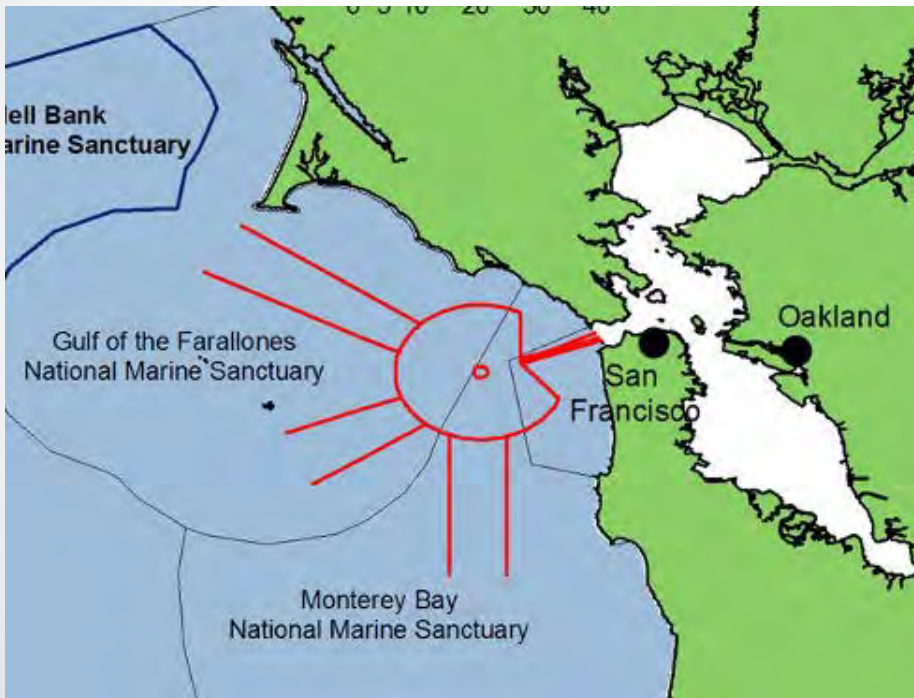
Between 1993 and 1997:

- Secondary treatment capacity increased from 0 to 43 million gallons per day (MGD)
- Wet-weather storage capacity increased by 21 MGD



How have the original reasons for exclusion changed?

2. Shipping channel

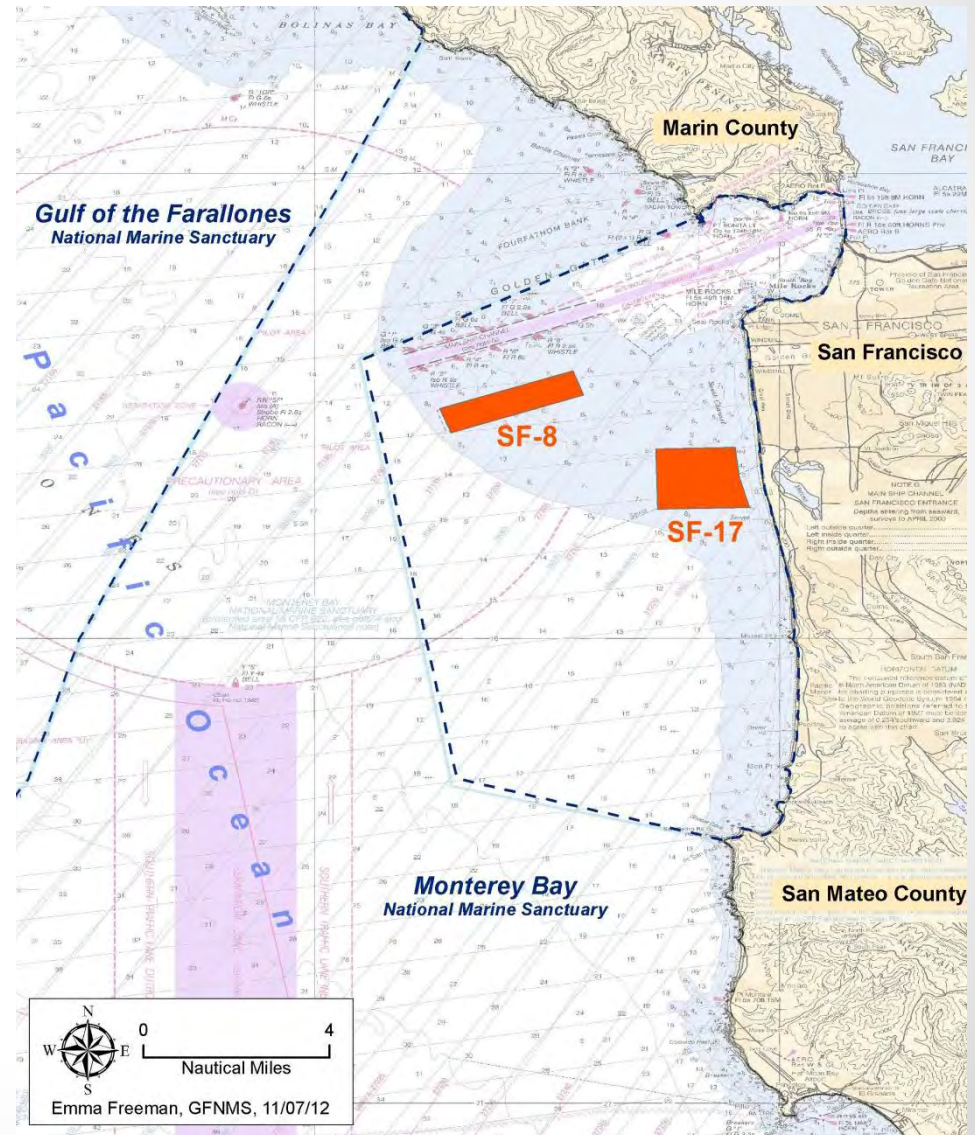


- Main Shipping Channel route has not changed since designation.
- Was vessel traffic in the Main Shipping Channel a valid reason for exclusion in the first place?

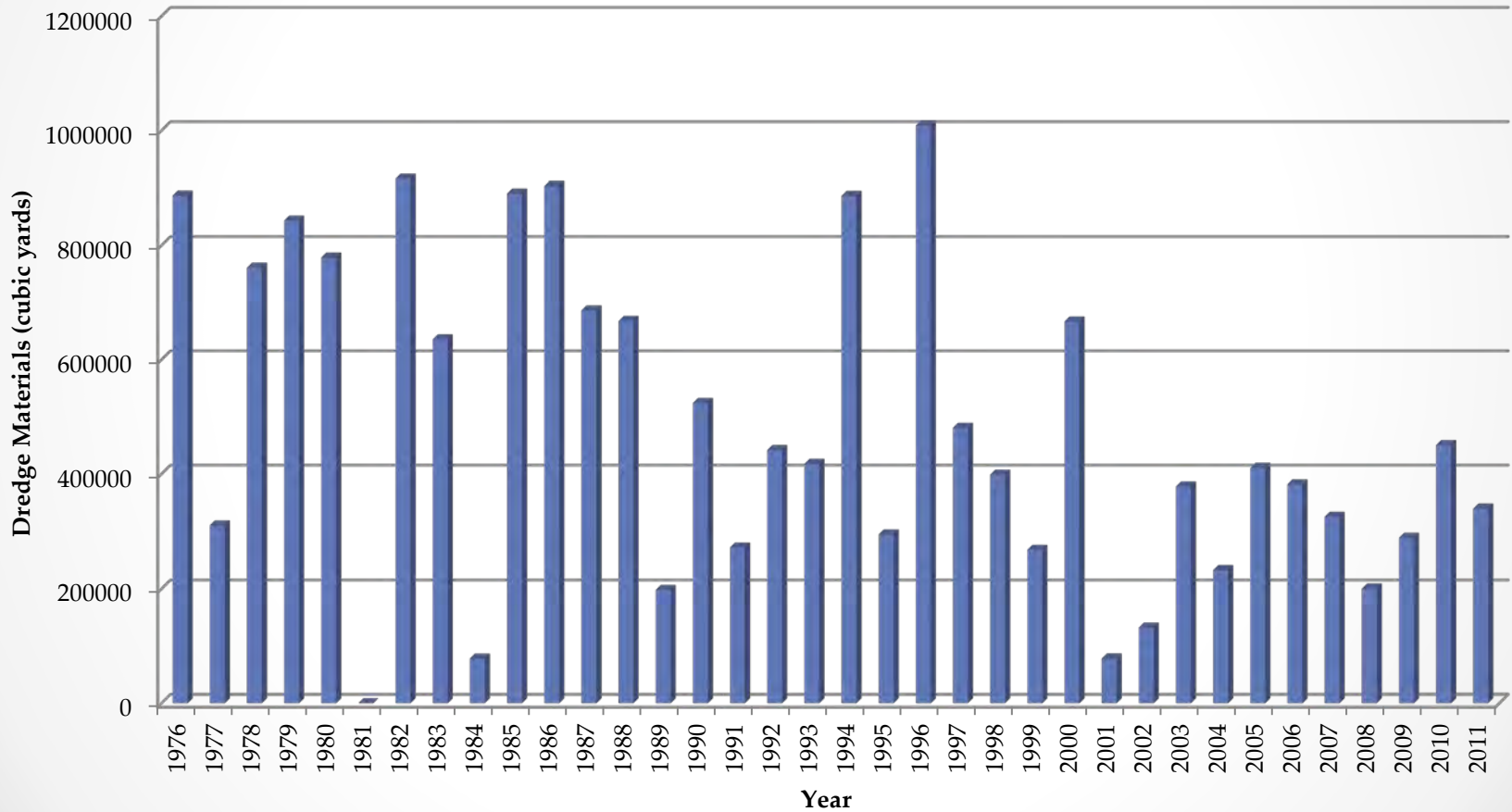
How have the original reasons for exclusion changed?

3. Dredge Material Deposition Sites

- Decrease in dredge material deposition since 1992
- Dredging of Main Shipping Channel is ongoing
- Coastal Regional Sediment Management



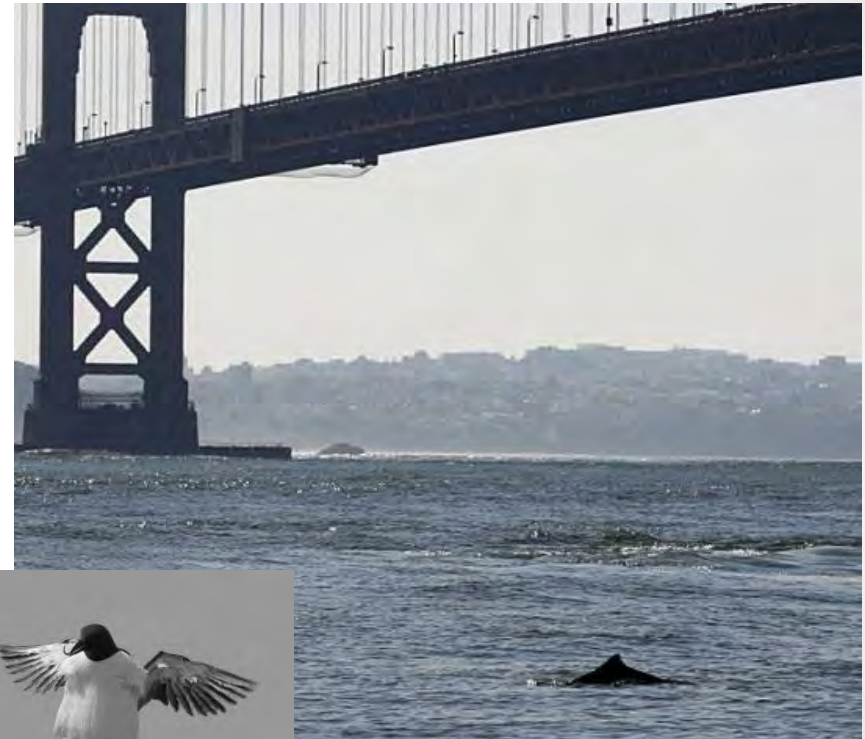
Volume of material dredged from Main Shipping Channel, 1976-2011



How might the area be of “special national significance” under the National Marine Sanctuaries Act?

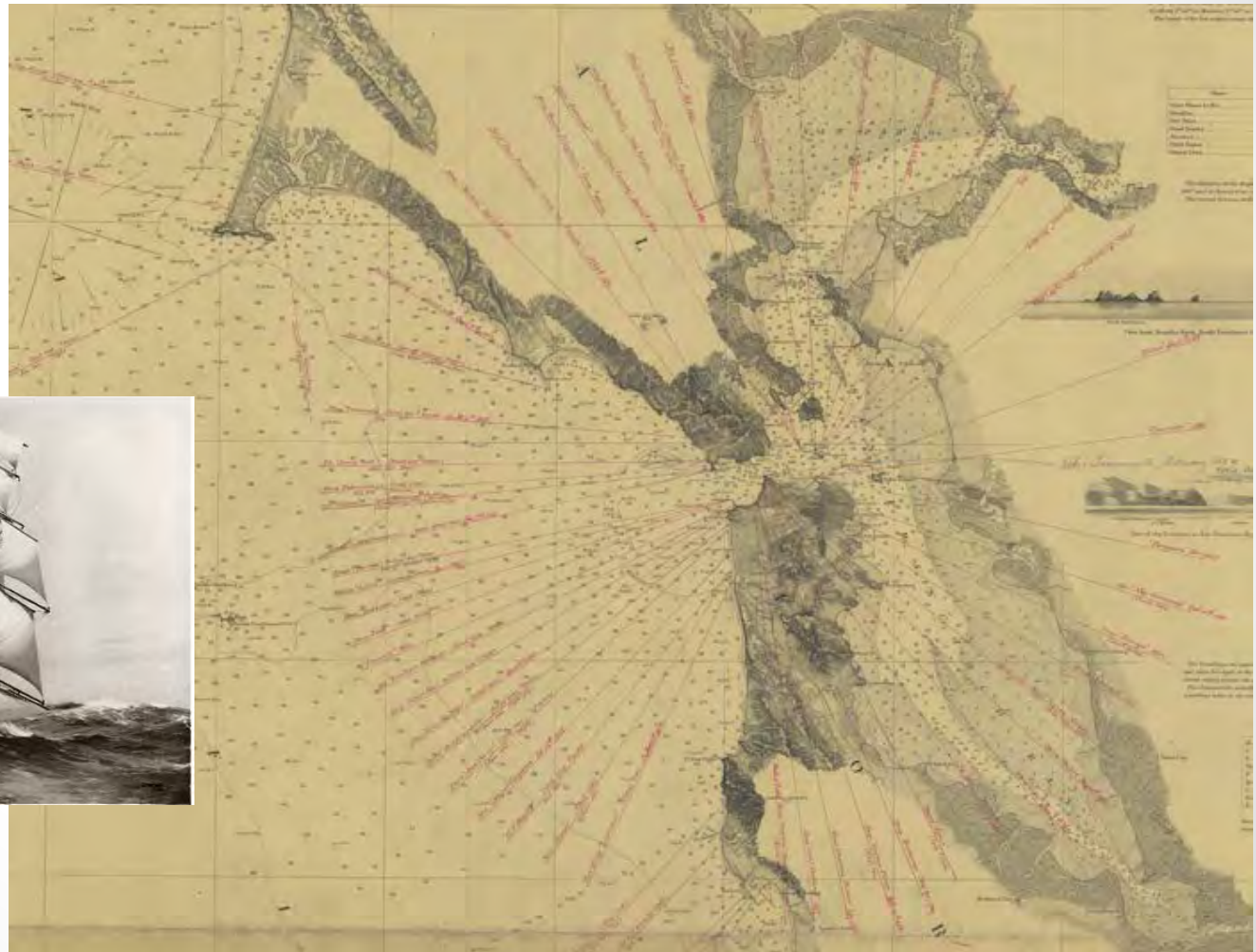
Natural resource and ecological properties

- Species present
- Ecosystem structure
- Habitat
- Biogeographic qualities



How might the area be of “special national significance” under the National Marine Sanctuaries Act?

Historical, cultural, and archaeological significance



How might the area be of “special national significance” under the National Marine Sanctuaries Act?

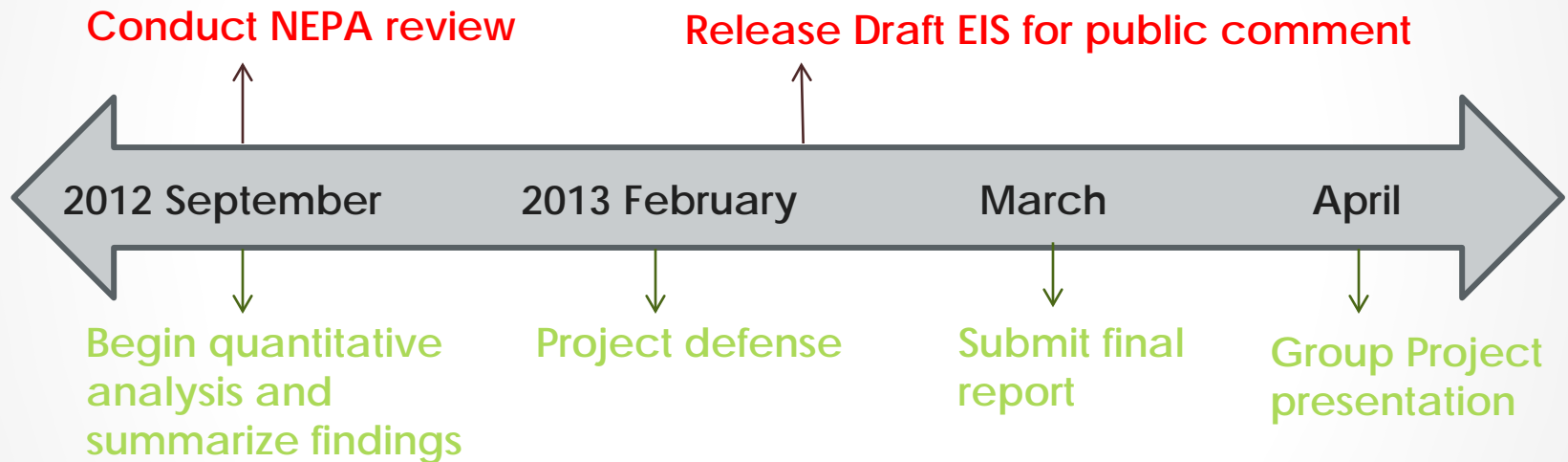
Human uses

- Commercial and recreational fishing
- Other commercial and recreational uses
- Research and education



Project timeline

NOAA/GFNMS



Bren GP

Thank You!

Any questions?

Emma Freeman:

efreeman@bren.ucsb.edu

Cameron Gray:

cgray@bren.ucsb.edu

Public Comment Period

August 7- October 10

How to Submit Comments

1. Online

- Federal eRulemaking Portal: <http://www.regulations.gov>. Submit electronic comments via the Federal eRulemaking Portal with Docket Number NOAA-NOS-2012-0153.

2. Public Scoping Meetings (Verbal or Written Comment)

Santa Cruz, CA August 16, 2012

LOCATION: Louden Nelson Community Center

ADDRESS: 301 Center Street

TIME: 4:00 pm to 6:00 pm

San Francisco, CA August 23, 2012

LOCATION: Golden Gate National Recreation Area Headquarters

TIME: 5:30 pm to 7:30 pm

Pacifica, CA September 12, 2012

LOCATION: Pacifica Community Center, The Card Room

TIME: 6:00 pm to 8:00 pm