

Environmental Science Lincoln Middle School



By Yian Pan, Genaro Ng, Owen Youngquist, and
Maddy Doten

Environmental Science

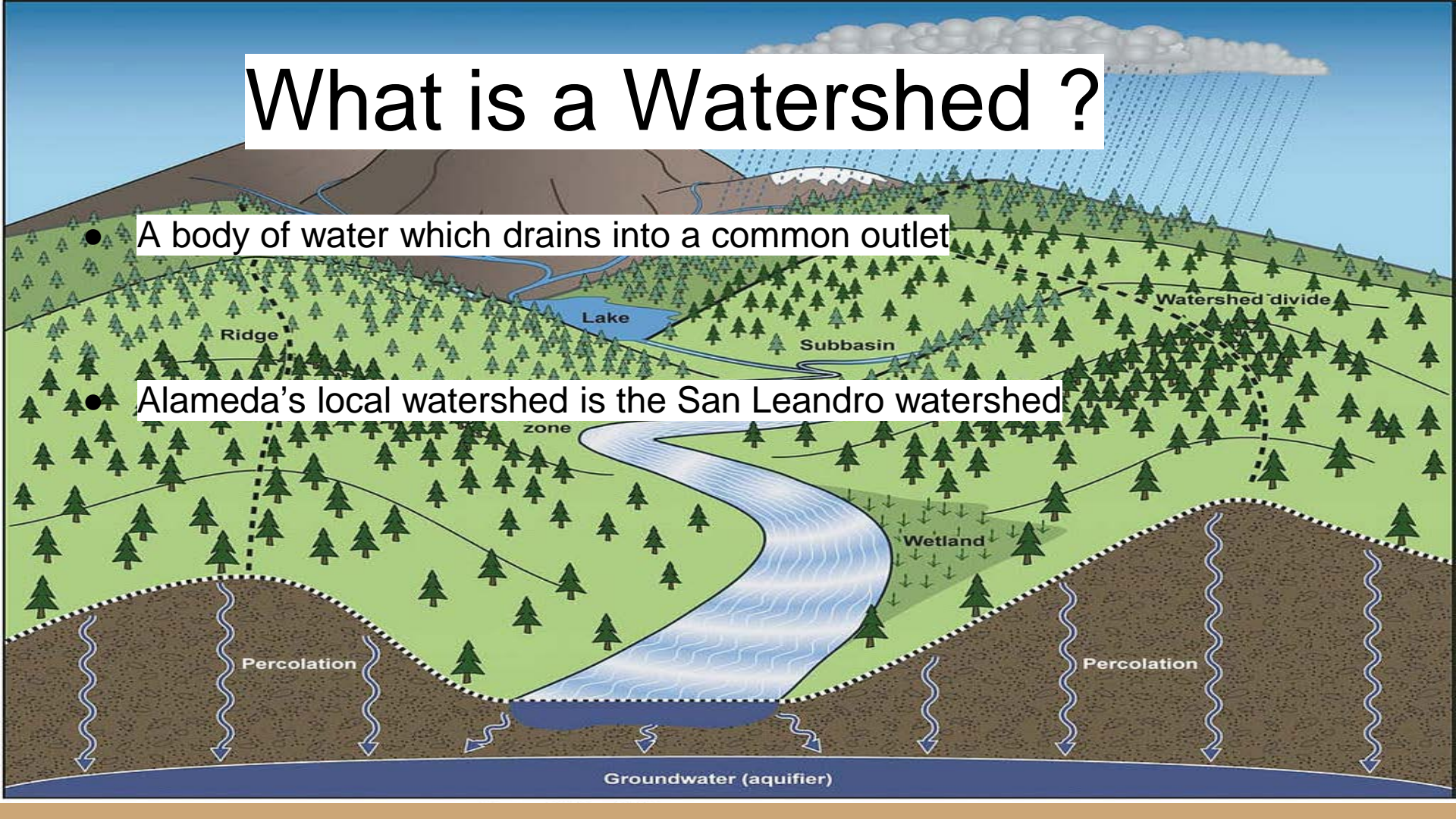
- Trimester STEM elective
- Teacher: Mrs. Hartigan
- Learn about the Ocean and its importance to the world



What is a Watershed ?

- A body of water which drains into a common outlet

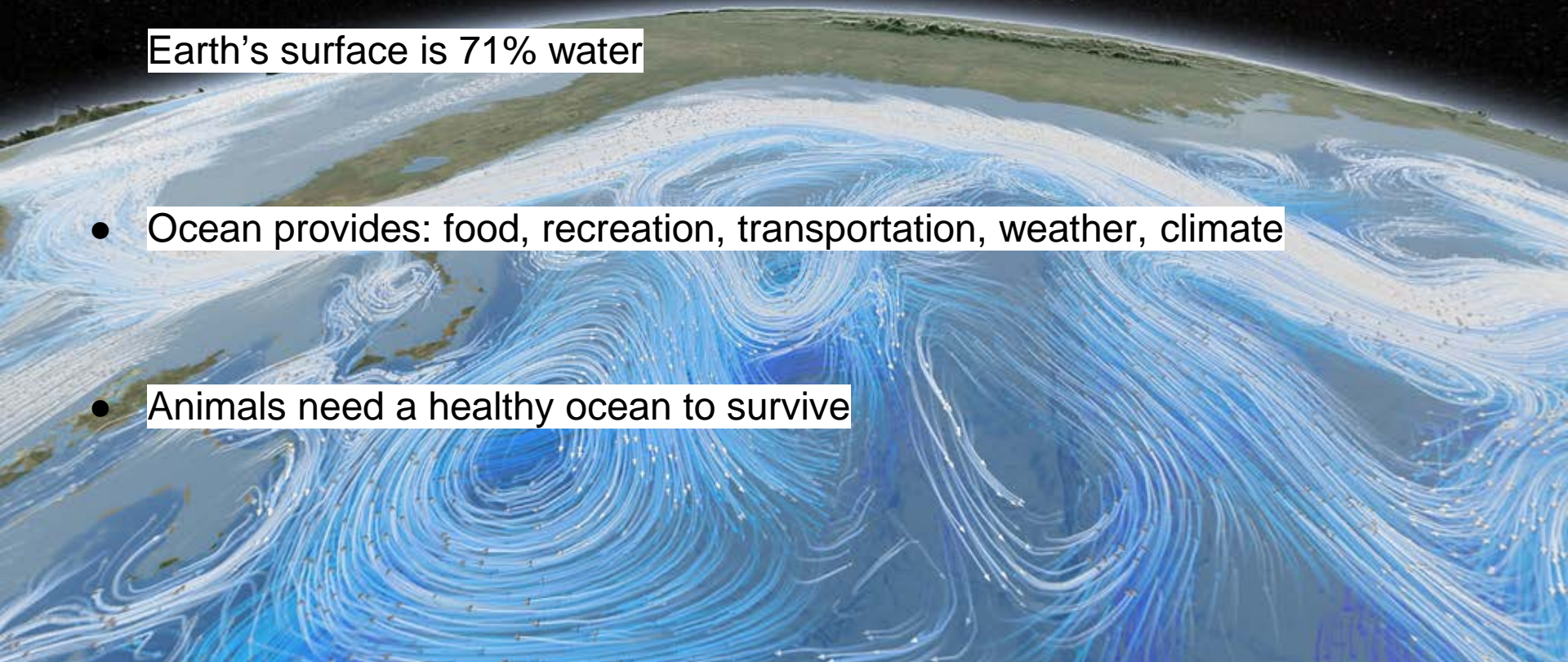
- Alameda's local watershed is the San Leandro watershed



What's Important About our Ocean?

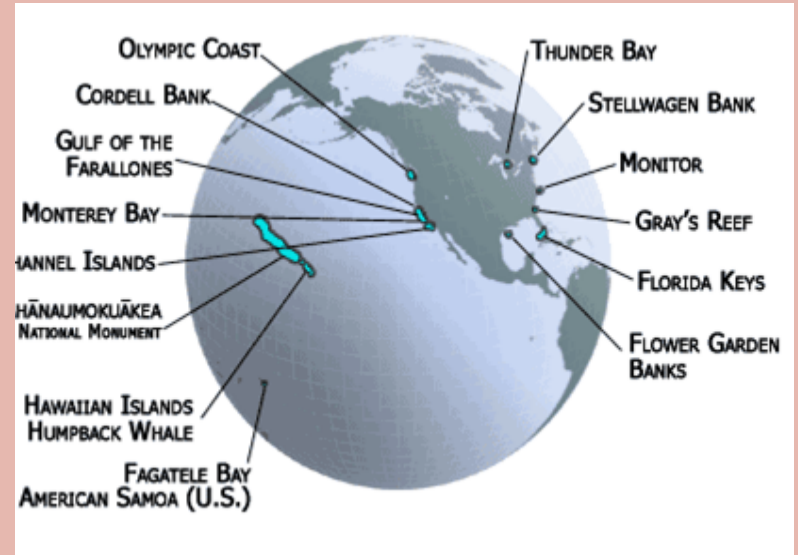
Earth's surface is 71% water

- Ocean provides: food, recreation, transportation, weather, climate
- Animals need a healthy ocean to survive



National Marine Sanctuary

- Underwater parks
- 13 sanctuaries in North America
- Local: Greater Farallones
National Marine Sanctuary

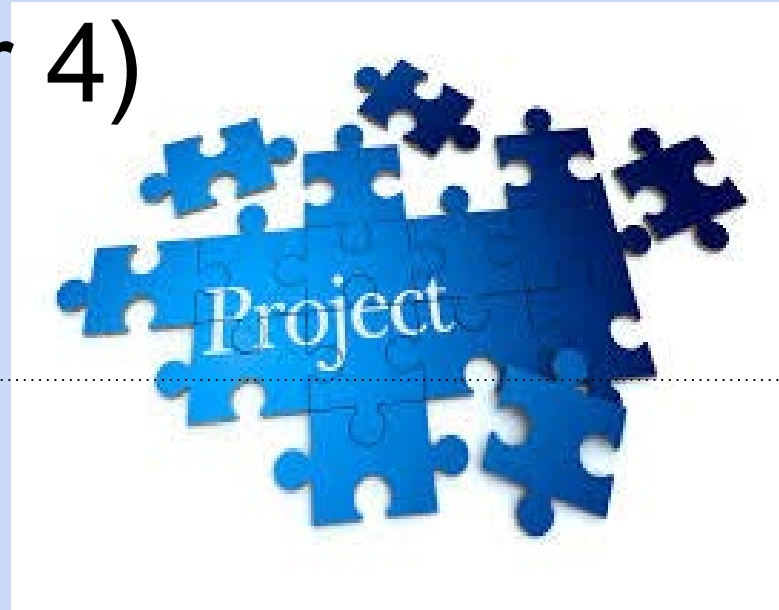


What is NOAA?

- Monitors National Marine Sanctuaries
- Gave grant of \$ 2500 to Lincoln
- Helps and protects ocean



Our Project (Year 4)



- Pick up trash (264 kg)
- Taking out invasive species (688 square meters)
- Planting native plants such as the marsh gumplant (70 square meters)
- Inform students at Lincoln and people all over the Bay Area

What We Have Done So Far



- Picked up 80 kg of trash
- Remove invasive plants
- Care for native plants
- Presented to PTA, School Site Council, Alameda School Board, 900 students at Lincoln

How can you help

- Picking up trash
- Removing non-native plants
- Recycling
- Spreading this information to others
- Caring!





THANK YOU