

# Protecting Blue Whales and Blue Skies in California's National Marine Sanctuaries



Photo credit: John Calambokidis / Cascadia Research



**Jessica Morten**, Resource Protection Specialist contractor  
with NOAA's Channel Islands and Cordell Bank National Marine Sanctuaries



# Reducing Ship Strike Risk

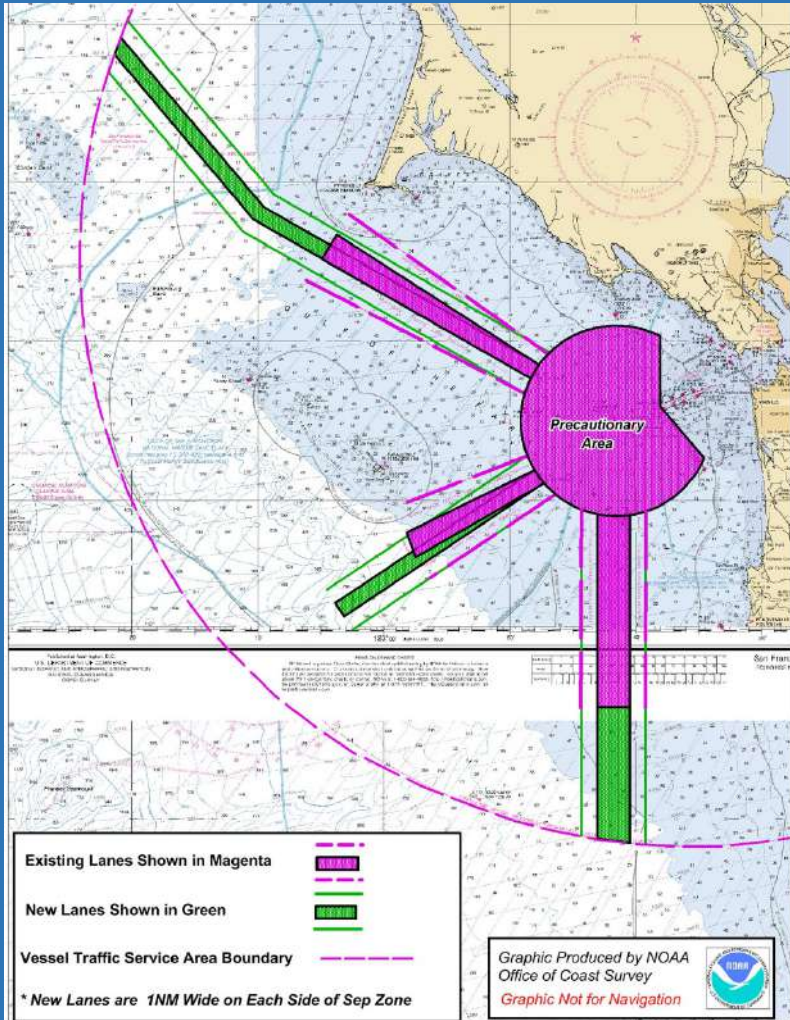
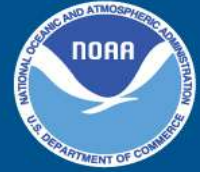


1. Reducing co-occurrence of whales and ships by adjusting Traffic Separation Schemes;
2. Establishing seasonal voluntary Whale Advisory and Speed Reduction Zones;
3. Establishing an incentive-based Vessel Speed Reduction program;
4. Supporting ongoing related research;
5. Engaging and working with industry/stakeholders.

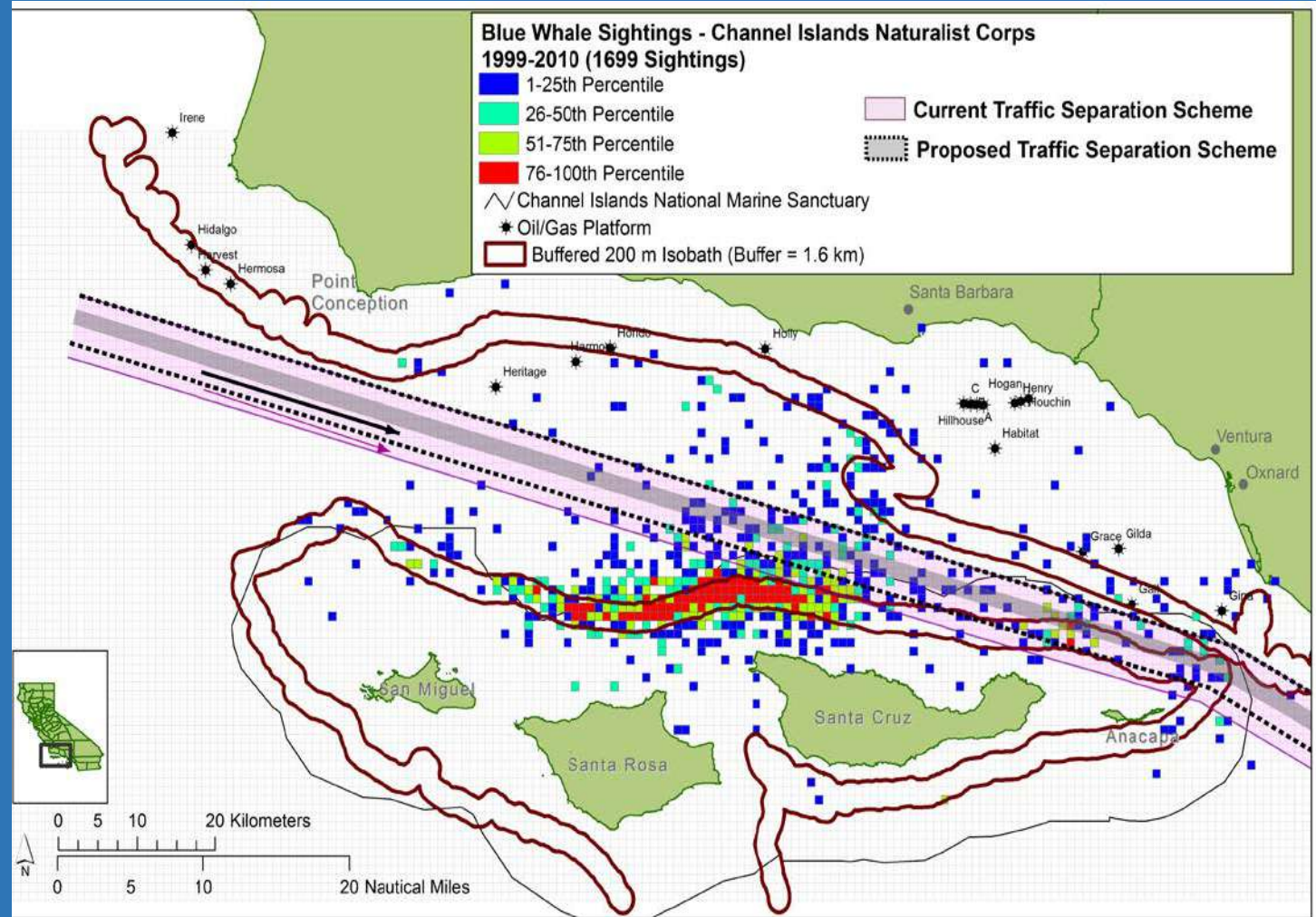


Photo credit: Sean Hastings / NOAA CINMS

# 1. Reduce Co-occurrence

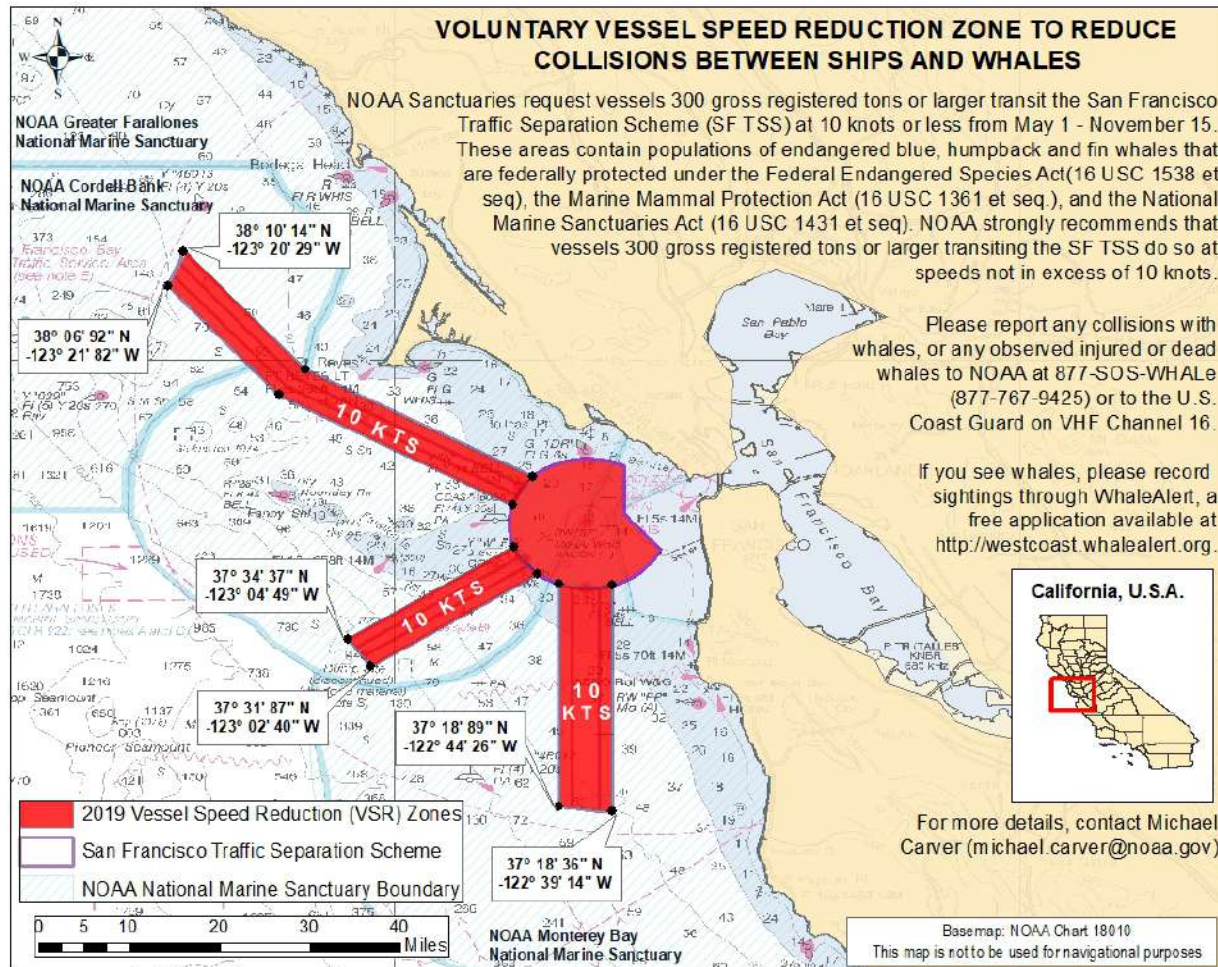


Amendments to the San Francisco Bay Traffic Separation Scheme - 2013

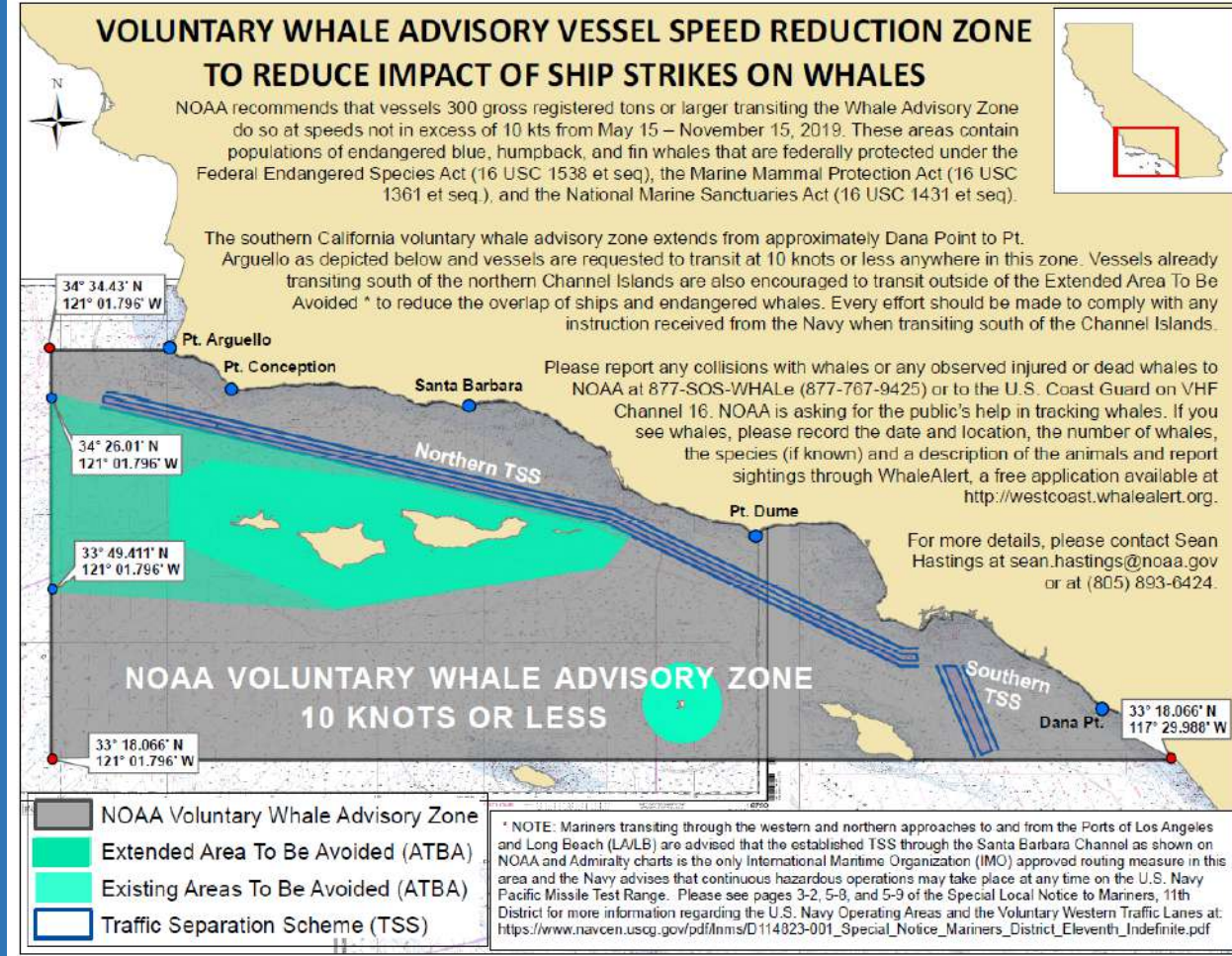


Amendments to the Santa Barbara Channel Traffic Separation Scheme - 2013

# 2. Voluntary Slow Speed Zones (request to all ships 300 gross registered tons or more)



2019 SF Bay Region  
May 1 – November 15, 2019



NOAA Charts 18720 and 18740

Chart not for navigational purposes.

19 JUNE 2019

2019 Southern California  
May 15 – November 15

# NOAA Voluntary Slow Speed Requests

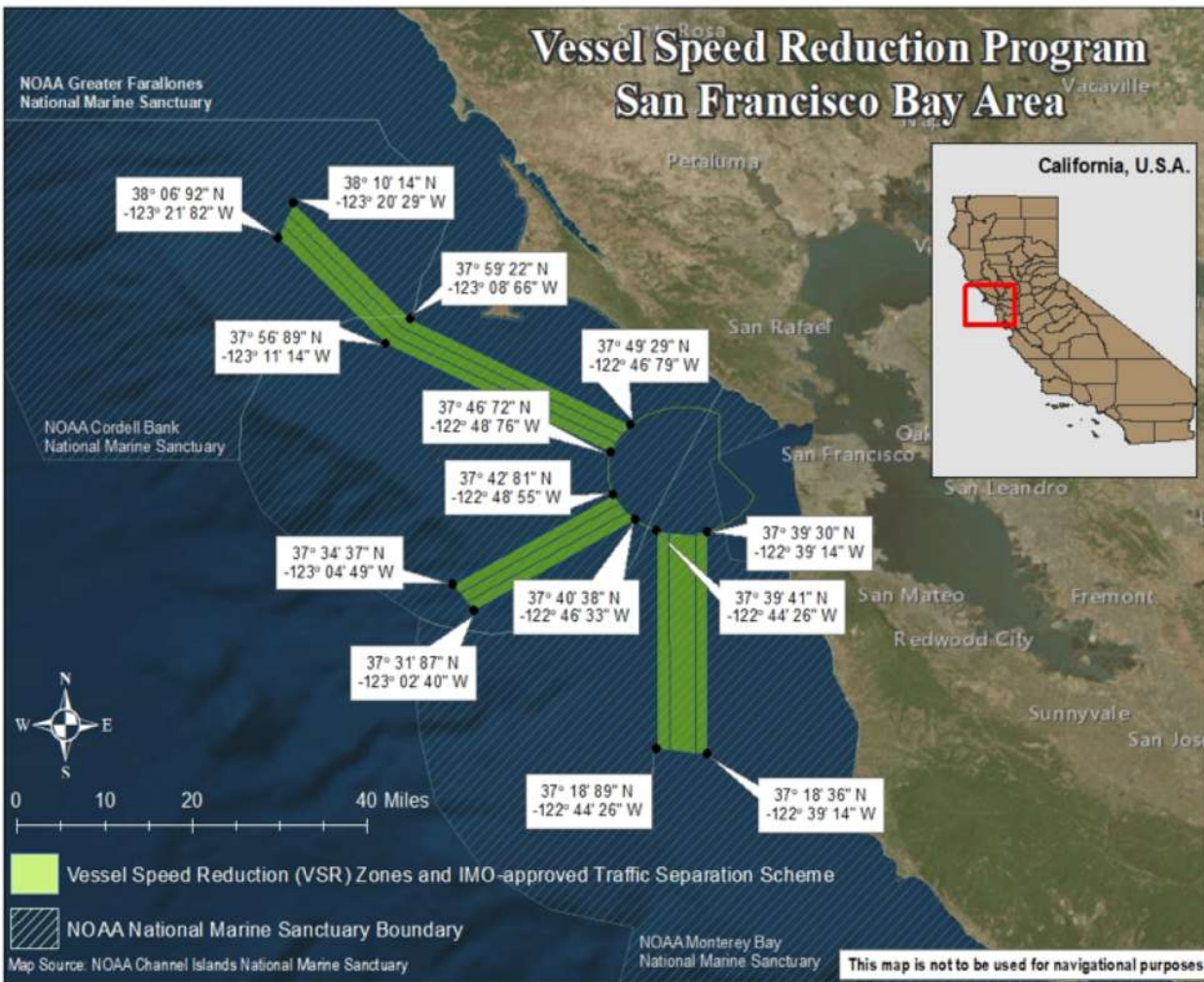


Percentage of cooperation, by year			
Region		2017	2018
San Francisco Bay Region NOAA Voluntary Slow Speed Request		45%	45%
Santa Barbara Channel Region NOAA Voluntary Slow Speed Request (NOTE: CINMS VSR geographic zone and timeframe has varied year to year)		18%	23%

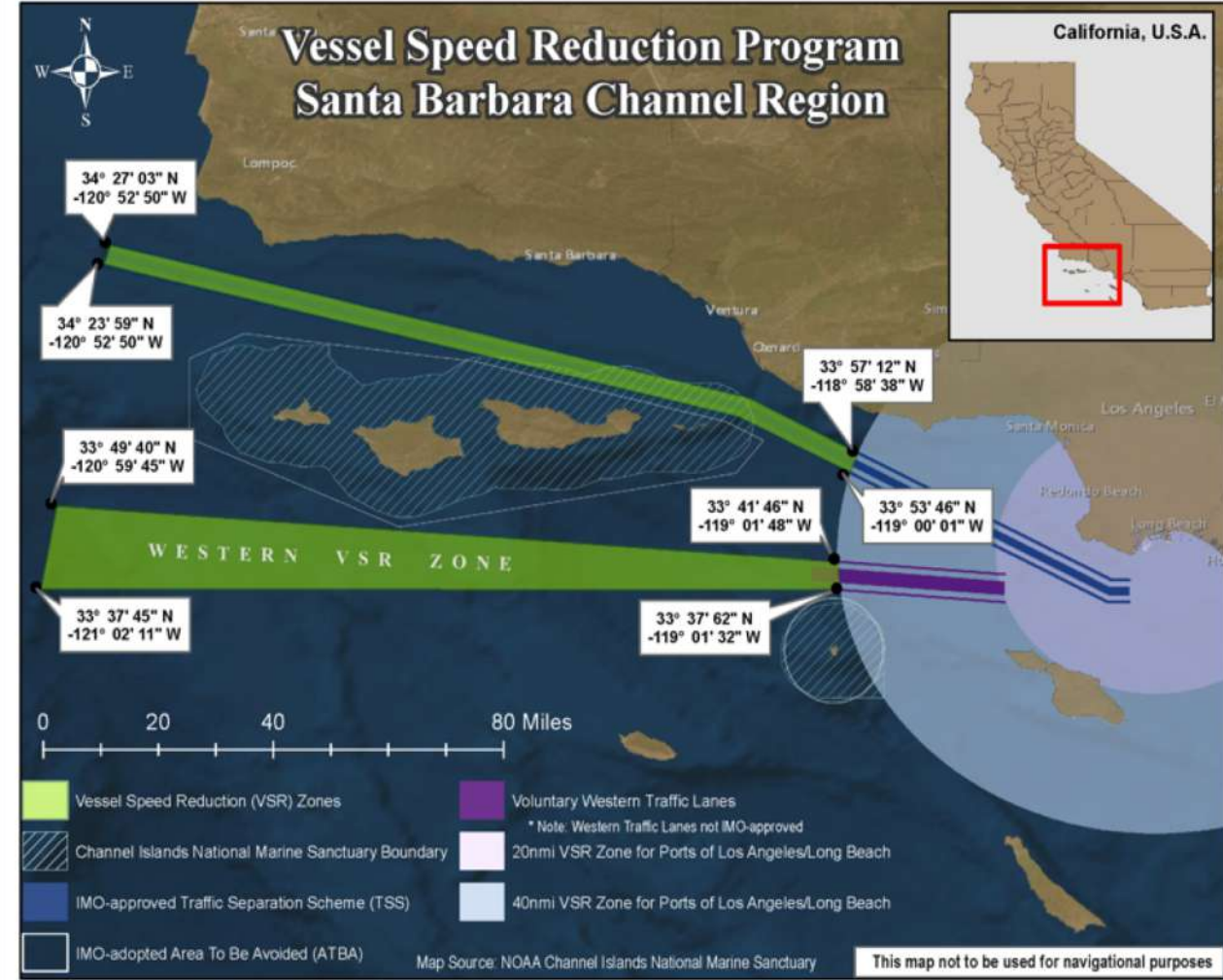
Photo credit: Lotti Keenan / Island Packers



# 3. Incentive-Based Program (enrollment open to container and car carrier lines)



2019 SF Bay Region  
Incentive Program VSR Zones



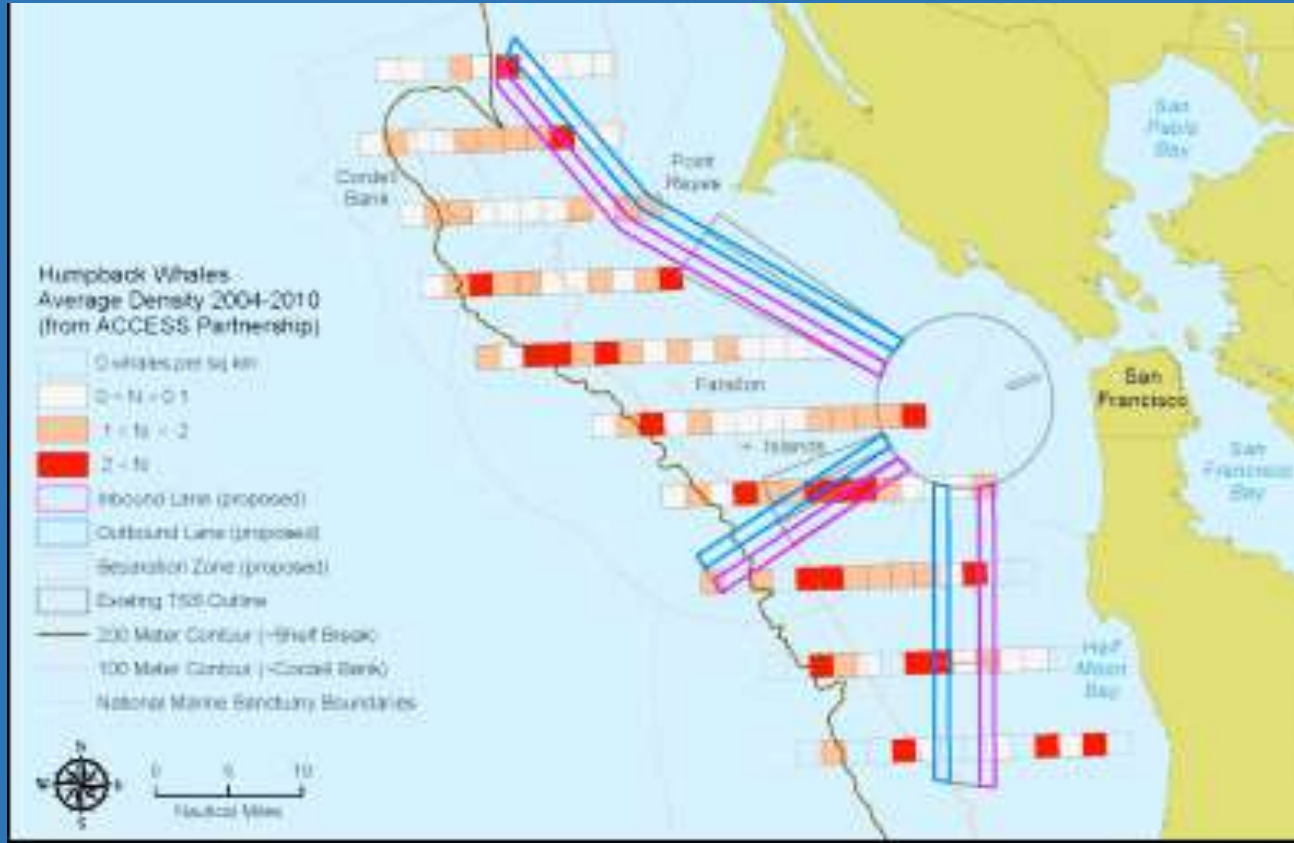
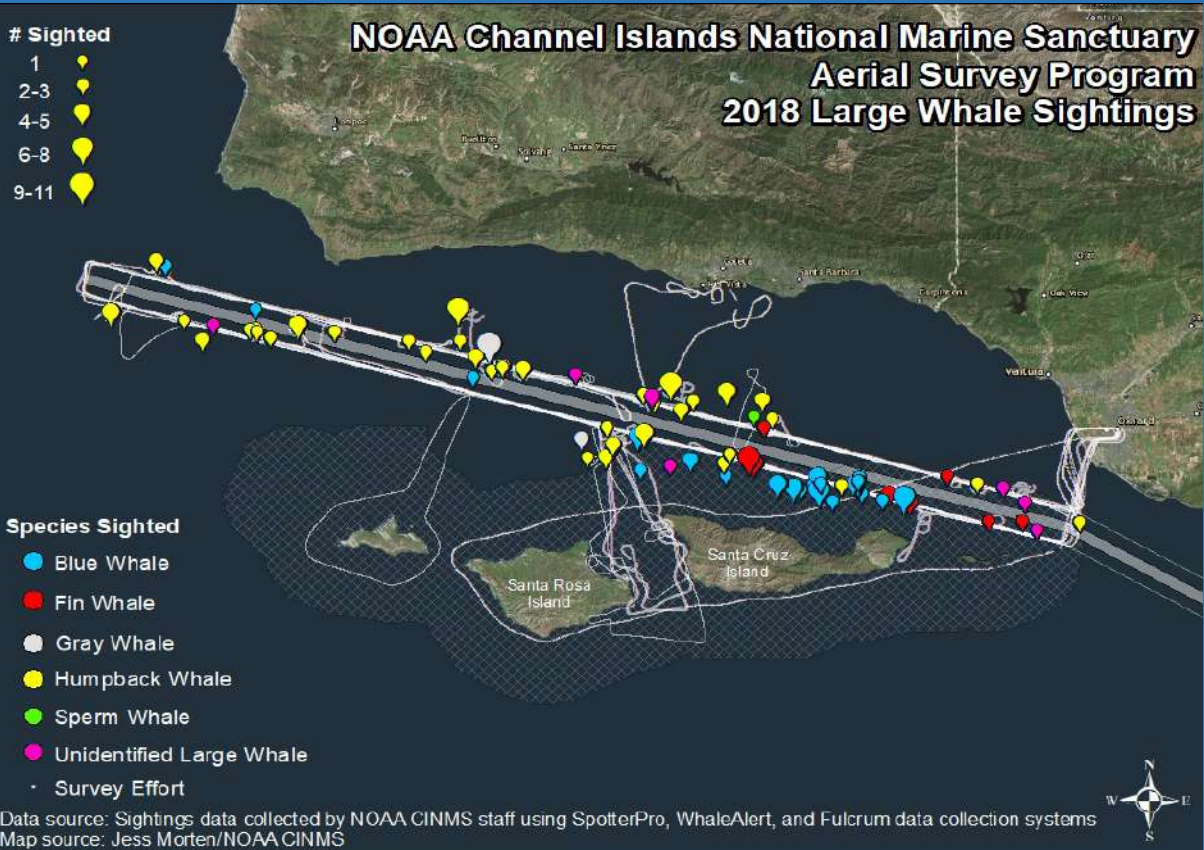
2019 Southern California  
Incentive Program VSR Zones

Incentive Program Year	2014	2016	2017	2018	2019
# Participating Companies	7	10	11	12	15
# Participating Vessels	14	31	59	280	TBD
Nautical Miles Traveled	2,700 nm	5,000 nm	12,630 nm	46,026 nm	TBD





# 4. Ongoing Research and Monitoring



# 5. Industry Outreach and Engagement



Incentive Program Awards Ceremony  
Port of LA - March 6, 2019

NOAA Voluntary VSR Awards Ceremony  
San Francisco - May 16, 2019

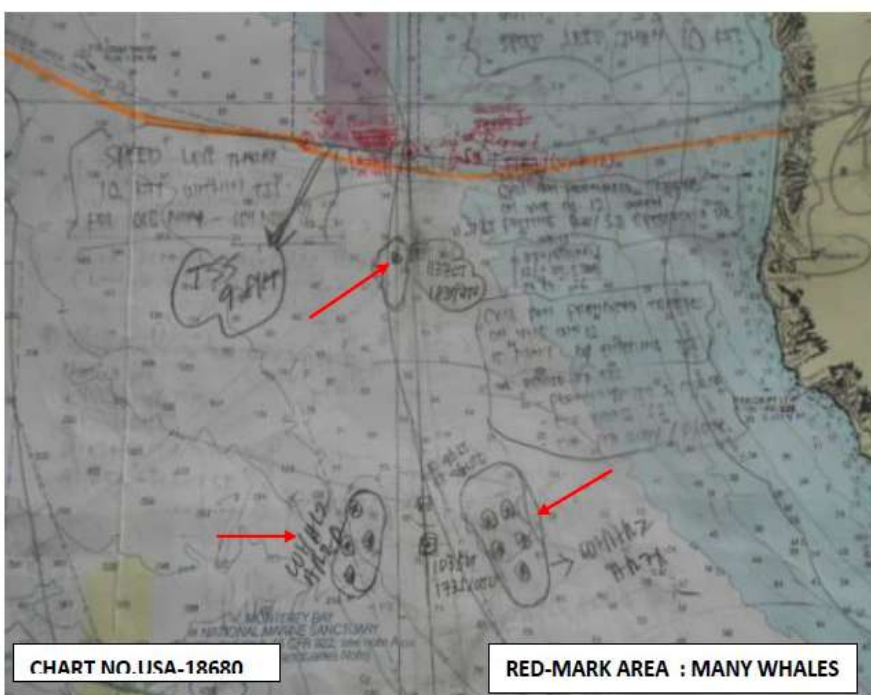


CHART NO. 115A-18680

RED-MARK AREA : MANY WHALES

PLS NOTE THAT WE HV SEE MANY WHALES AT ABOVE AREA



PSN: 37 -05.7N,122-35.4W

# Next Steps for West Coast Ship Strike Work



- ❖ Better understand the frequency of the issue
- ❖ Increase awareness of the issue
- ❖ Look into expanding Areas To Be Avoided (ATBAs) and explore additional TSS adjustments
- ❖ Continue to explore options for VSR policy

# QUESTIONS?



**Jess Morten**, Resource Protection Specialist contractor  
with Greater Farallones Association & University of California Santa Barbara  
for NOAA Channel Islands and Cordell Bank National Marine Sanctuaries  
E-mail: [jessica.morten@noaa.gov](mailto:jessica.morten@noaa.gov)

**Michael Carver**, Deputy Superintendent  
NOAA Cordell Bank National Marine Sanctuary  
E-mail: [michael.carver@noaa.gov](mailto:michael.carver@noaa.gov)

**Sean Hastings**, Resource Protection Coordinator  
NOAA Channel Islands National Marine Sanctuary  
E-mail: [sean.hastings@noaa.gov](mailto:sean.hastings@noaa.gov)