

LOCAL SANCTUARIES

	Denomination	Expansion	Acreage (Sqmi)
GFNMS	1981	2015	3,295
CBNMS	1989	2015	1,286
MBNMS	1992	2008	6,094



San Francisco Pacifica Exclusion Area (SFPEA)



Ship Traffic



Dredging



Storm Water Discharges

2013



BREN SCHOOL OF
ENVIRONMENTAL SCIENCE & MANAGEMENT
UNIVERSITY OF CALIFORNIA SANTA BARBARA

Dredging:

Placement of dredged material occurs in other sanctuaries and the material dredged from the Main Shipping Channel (MSC) is considered “free” of toxins.

Water treatment Run off

The annual number of times that water quality standards were exceeded has declined since the creation of the Exclusion Area in 1992.

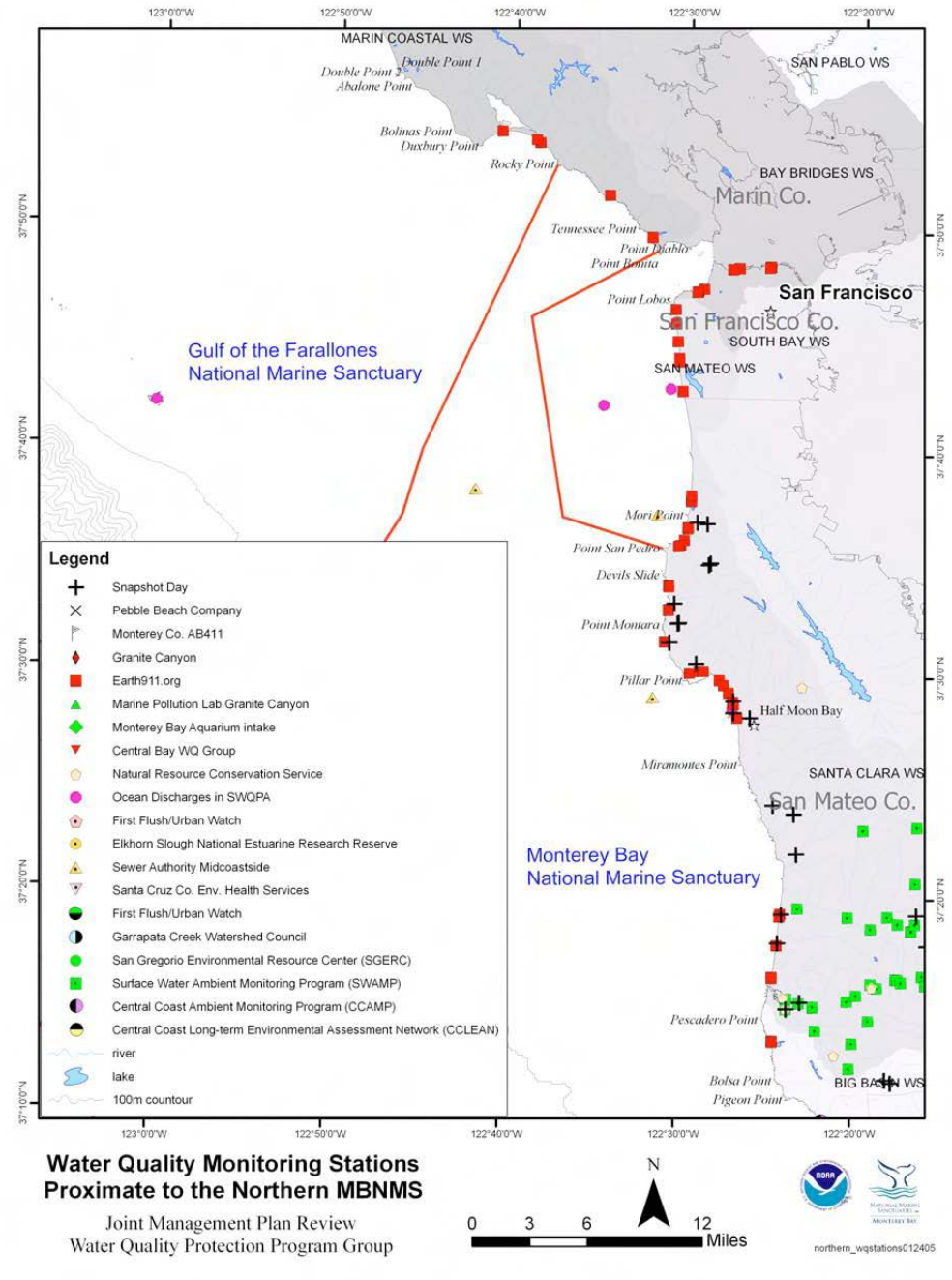
In addition, the installation of new infrastructure in the years following MBNMS designation has significantly decreased the number of CSD (Combined Sewer Discharge) events.

Ship traffic

Vessel traffic entering and exiting the San Francisco Bay along the MSC does not pose a barrier to the proposed sanctuary expansion. The level of vessel traffic in the Exclusion Area is comparable to the level of traffic in existing other National Marine Sanctuaries, including Stellwagen Bank, Channel Islands, and Monterey Bay.

Note: vessel traffic has been further improved with the new Traffic Separation Scheme (TSS) and voluntary speed reduction program

Northern Management Area (NMA) Under GFNMS supervision



Degree Zero: Administrative Reality



Hydrologic argument:

The plume from San Francisco Bay flows north toward the Point Reyes Peninsula

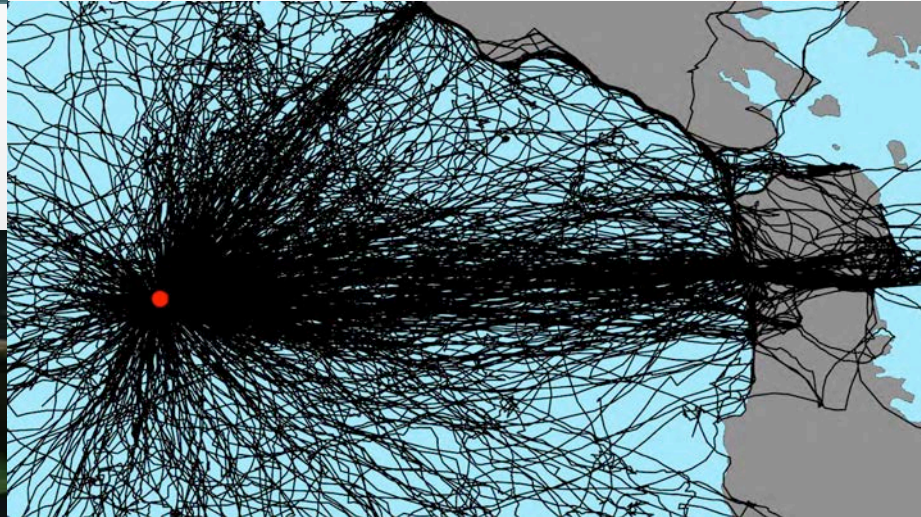


The zone of impact of the San Francisco Bay outflow
John Largier (2016)



BMW Oracle catamaran debris
The Coastodian (2012)

Ecological Argument: Wildlife transits between the Farallones Island and the bay



Cultural argument: Muwekma Ohlone band relation to the Islands

The Muwekma Ohlone tribes view the Shellmounds located in Berkeley as a portal for the dead. Starting at “the midpoint of the Eagle’s tail” the soul of the deceased travel west in a straight sightline that runs from the middle of the Eagle’s body, through its beak and to the Farallones... their “Heaven”



**Location Argument:
GFNMS Headquarter & visitor center,
located near the San Francisco scenic drive,
faces the waters of SFPEA**



Tourism Outreach Argument:

30 million visitors annually!

AMBASSADORS

SF Zoo & Garden

California Academy of Science

Marin Mammal Center

Bonitas Point lighthouse

Golden Gate Raptor Observatory

Golden Gate Welcome center

Crissy field & GFNMS visitor center

Lands End Trail

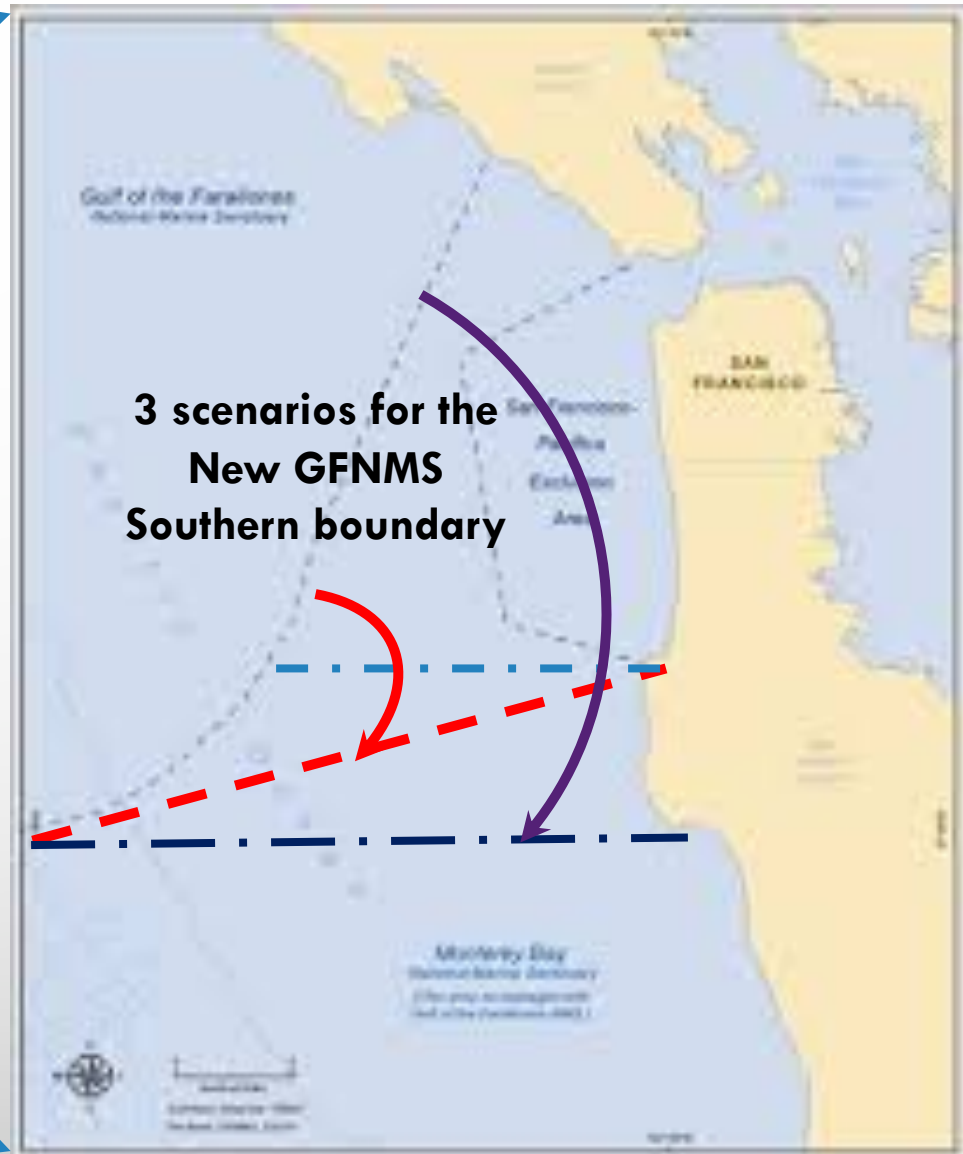
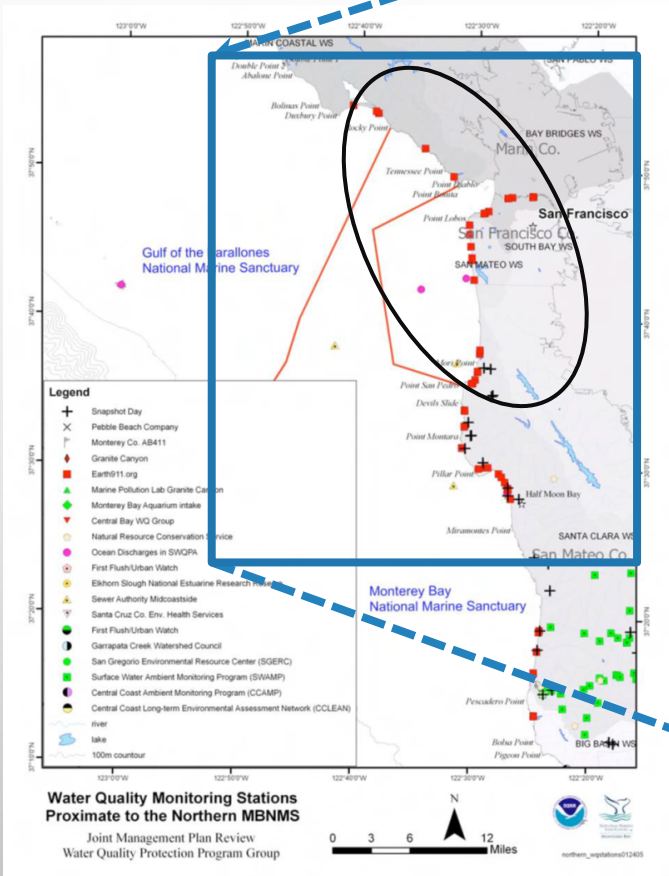
Legion of Honor

Shipwreck Museum

Cliff House



Proposal: Inclusion of SFPEA in GFNMS



PENDING ISSUES

Management of water quality sites included in GFNMS

Responsibility for beach warning or closure in GFNMS

Responsibility for cruise ship discharge monitoring

Complication in establishing boundary changes

Others ...

Resolution of the GFNMS Advisory council to recommend the integration of the Pacifica Exclusion Zone in the sanctuary system

Whereas in 1992 the San Francisco Pacifica Exclusion area (SFPEA) was carved out from the initially proposed footprint of the Monterey Bay National Marine Sanctuary (MBNMS) because of storm water discharges, dredging and ship traffic incompatible with sanctuary regulations,

Whereas by 2013, these problems have been mitigated,

Whereas The SFPEA is an integral part of the San Francisco coastline and the Golden Gate entrance to the bay,

Whereas the Farallones Islands, the namesake of GFNMS, are an iconic site for local indigenous tribes as well as part of the City and County of San Francisco,

Whereas the hydrography & ecology of the San Francisco Bay is directly linked to the Gulf of Farallones,

Whereas the geographical location of SFPEA provides an ideal seascape for the interpretation of the sanctuary waters by (1) GFNMS headquarters & visitor center located on Crissy field, (2) the San Francisco Zoo (which is in the immediate proximity of ocean beach), (3) The California Academy of Sciences (in Golden Gate park), (4) The Lands-End trail and (5) other potential partners or “ambassadors” of GFNMS,

Be it resolved to incorporate the northern end of the MBNMS Northern management area, which includes SFPEA, in the Greater Farallones National Marine Sanctuary (GFNMS), by substituting the current GFNMS southern boundary line which ends at Rocky Point by a line connecting Point San Pedro to the offshore southernmost point of the GFNMS boundary.

The background features a light gray gradient with several realistic water droplets of varying sizes scattered in the corners. The droplets have highlights and shadows, giving them a three-dimensional appearance. The text is centered in the middle of the page.

DISCUSSION & EDITS

Berkeley



Frederick Billings, Trustee of
the College of California



In happy climes, the seat of innocence,
Where nature guides and virtue rules,

Where men shall not impose for truth and sense
The pedantry of courts and schools:

There shall be sang another golden age
The rise of empire and of arts,

The good and great inspiring epic rage,
The wisest heads and noblest hearts.