

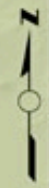
Tomales Bay Mooring Program Progress Update



Karen Reyna
Greater Farallones National Marine Sanctuary
May 9, 2018



Photo Credit:
*Pacific Coast
Science and
Learning Center*



WHY DEVELOP A TOMALES BAY MOORING PROGRAM?

- Develop and implement a comprehensive plan to ensure the protection of water quality, natural resources, and safety in Tomales Bay.





TOMALES BAY: ISSUES OF CONCERN

- Pathogen Impairment: Sewage discharge
- Discharges of fuel, oil and toxic materials from boat grounding and sinking events
- Wildlife Disturbance
- Invasive Species
- Vessel Mooring and Anchoring Habitat Impacts: Eelgrass



Sunken Vessel



Harbor Seal Flush



Invasive Spartina

SOLUTION: THE VESSEL MANAGEMENT PLAN

Issues Covered:

- **Sewage Services**
- **Oil and Bilge Services**
- **Vessel Mooring Program**
- **Boater Education and Outreach**
- **Preventing the Introduction of Non-native Species**



**SOLUTION:
THE VESSEL MANAGEMENT PLAN**

**9 Federal, State and
Local Agencies
Coordinated Efforts**



TOMALES BAY: ISSUES OF CONCERN

- **Pathogen Impairment: Sewage discharge**
- **Discharges of fuel, oil and toxic materials from boat grounding and sinking events**
- **Wildlife Disturbance**
- **Invasive Species**
- **Vessel Mooring and Anchoring Habitat Impacts: Eelgrass**



Sunken Vessel



Harbor Seal Flush



Invasive Spartina

SOLUTION: ESTABLISHED THE TOMALES BAY MOORING PROGRAM



Outcome: a coordinated, collaborative program that results in a cleaner bay; using existing authorities and working with the boating community.

Key Actions

- Creates a streamlined process for obtaining mooring leases, and educates the public on how to go through the process.
- Ensures moorings are made of non-toxic materials to protect water quality.
- Keeps vessels out of eelgrass beds, seal haul-out areas, and aquaculture lease areas, preventing impacts to sensitive habitats and wildlife.
- Improves the marine environment by removing moorings and grounded, derelict, and deserted vessels.

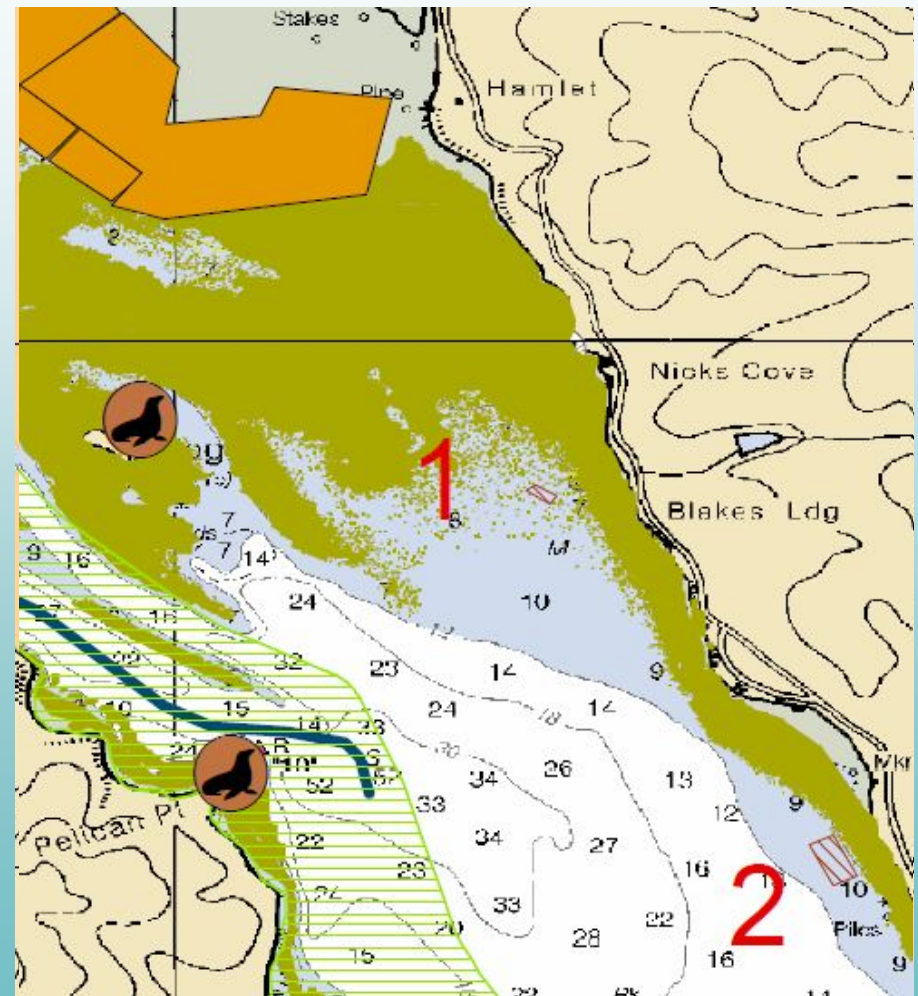
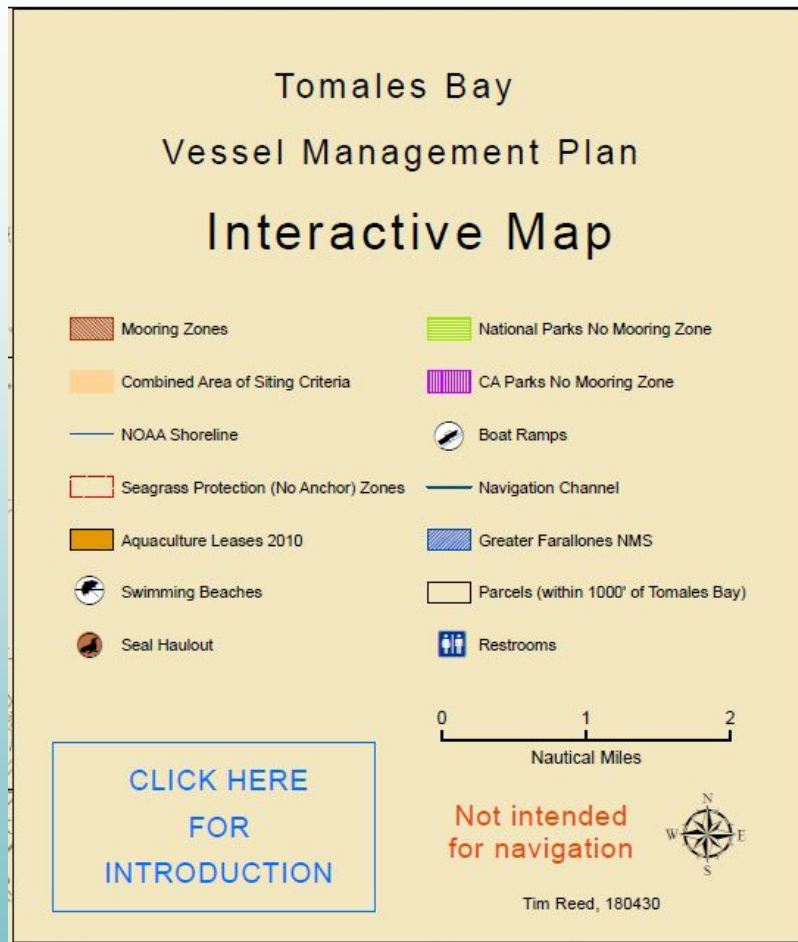


OUTCOMES

- **ALL** moorings made of appropriate materials.
- **ALL** moored vessels have liability insurance.
- **ALL** moorings inspected annually.
- **ALL** mooring contractors have commercial marine liability insurance, including coverage for environmental accidents and pollution.
- Coordinated compliance surveys on a regular basis and a few cases referred to NOAA Office of Law Enforcement.
- **64** Mooring Lease applicants, **37** Leases Issued.
- Streamlined and affordable lease program.

TOOLS: Streamlined Process

Allows the user to turn layers on and off



TOOLS: Streamlined Process




California STATE LANDS Commission

Home About Public Access Meetings Leases/Permits Programs Info

TOMALES BAY MOORING PROGRAM REQUIREMENTS (POLICIES AND CRITERIA) AUGUST 25, 2017

Introduction:

The Tomales Bay Mooring Program (MP) was developed as part of the Tomales Bay Vessel Management Plan by NOAA's Greater Farallones National Marine Sanctuary (GNMS) staff in partnership with California State Lands Commission (CSLC) staff. Since 1981, when the sanctuary was designated, Sanctuary regulations have prohibited the discharge of materials into and disturbance to the seabed, which includes the placement of moorings. Although mooring installation is still a prohibited activity, the establishment of the Vessel Management Plan in April 2013 and subsequent Mooring Program now allows for a mechanism to permit

Mooring Lease Application Guide

Applying for a Tomales Bay Vessel Mooring Lease

4. Updated Liability Insurance

- The TBMP and your CSLC Lease requires that all vessels maintain, and submit proof of Protection and Indemnity Liability Insurance with limits in the amount of no less than \$1,000,000 per occurrence which names the State, its officials, and the vessel as an additional insured. Please submit this information to the CSLC.



forward with
Mari Tutov, CSLC
S (415- 970-
provide feedba
any way tha

Bob Tutov
Public Land Manager



Program FAQs

How much does a Tomales Bay mooring lease cost?

What moorings are allowed within Tomales Bay? Can I moor outside the bay?

What are the requirements for mooring in the bay?

How do I apply for a Tomales Bay Mooring Lease?

How long will my application be processed?

What are the requirements for mooring installation?

How do I access the Interactive PDF Map?

What are the differences between Mooring versus Anchoring?

How do I find current regulations on anchoring in Tomales Bay?

OUTCOMES: Protecting and Improving the Tomales Bay Environment

- **ZERO** mooring systems in eelgrass, period, resulting in the protection of approximately 960 acres of eelgrass within Sanctuary waters.
- **TWO** floating docks removed from eelgrass habitat.
- **42** abandoned mooring systems removed of which **28** were located within or adjacent to eelgrass.
- **TWO** abandoned vessels removed preventing habitat damage and toxic materials released in Tomales Bay.

We achieved a coordinated, collaborative program that provides guidance for boater compliance and has resulted in additional protections to habitat, wildlife, and water quality, without altering existing authorities or regulations within Tomales Bay.

THANK YOU!

A photograph of a rocky beach with wooden piers extending into the water, with hills in the background. The scene is overcast and the water is calm. The piers are made of weathered wood and some have small structures on top. The beach is covered in dark rocks and wet sand. The hills in the background are green and hazy.